



FIVE PHASE PLAN FOR GROWTH

FROM THE RECTOR

The modern missionary movement has seen amazing growth since its beginning at the end of the 18th century. The gospel has been carried to every continent. One evidence of the fruitfulness of these efforts is the fact that Latin American churches are taking an increasing role in reaching the yet-unreached areas of the world.

While this is cause for rejoicing, there is still much to be done. One of the greatest areas of need is in the theological training of pastors, missionaries, and leaders of the global south. While the majority of Evangelical Christians now live in the global south, theological training resources are heavily concentrated in the United States. My guess is that about 90% of the world's theological resources are spent on the 11% of the world's Christians who live in the United States. The fact that it is difficult to find precise statistics is itself an indication of this imbalance.

We began Seminario Bíblico William Carey in 2006 based on the conviction that Argentines, and Latin Americans in general, would provide what might be the most fruitful missionary force in the 21st century. Latin Americans are talented, warm, passionate, creative, daring, and ingenious servants of Christ. And they deserve the highest quality theological training.

Seminario Carey has had its ups and downs, but over the last five years the Lord has blessed us with significant growth. Our online certificate program is serving close to 300 students in Chile, Argentina, Cuba, and across Latin America. We recently signed an articulation agreement with the Southern Baptist Theological Seminary in Louisville, Kentucky to begin offering a Masters of Arts in Theological Studies beginning in early 2018.

Up to this point, the seminary staff has worked out of borrowed office space. However, the seminary now needs its own administrative space, its own classrooms, and room to develop a research library and student center. We hope the five phases laid out in the following pages will help you see how we can achieve this and future growth in the years to come.



SAM MASTERS



TABLE OF CONTENTS

PHASE 1 - ADMINISTRATION CENTER	4
PHASE 2 - BUILDING RENOVATION	6
PHASE 3 - PROPERTY PURCHASE	8
PHASE 4 - RETREAT CENTER	10
PHASE 5 - MULTIPURPOSE CAMPUS	13

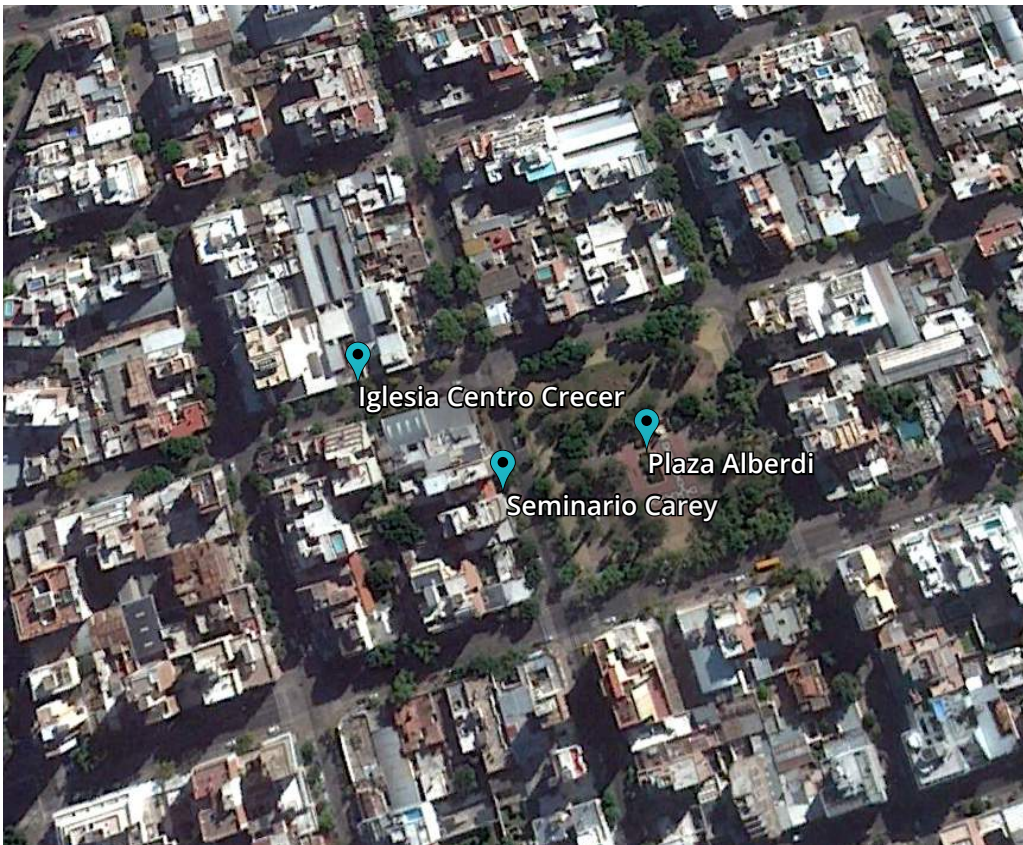


CORDOBA ADMINISTRATION CENTER

With a population of nearly 2 million, Córdoba is the second largest city in Argentina. It is a center of industry and education. Córdoba is also home to seven universities including the Universidad Nacional de Córdoba which was founded in 1613 and now has a student population of 50,000. Córdoba is located at the geographic heart of the southern cone of South America. This makes it a hub for regional travel and an ideal location for a theological seminary. Seminario Carey's annual conference attracts attendees from neighboring countries such as Chile, Peru, Bolivia, and Paraguay.



Phase one consists of developing an administration center in Córdoba. The property's location is strategic as it is near downtown Córdoba and the university. Many of the main bus lines pass in front of the building. It is also just around the corner from Iglesia Centro Crecer.



BUILDING RENOVATION

In early 2018, Seminario Carey will launch the first accredited program of its kind in South America in partnership with Southern Theological Seminary.

The Administration Center will need to be renovated to match the needs of our incoming students and growing programs.

Once renovated, the building will include:

- administrative space for Seminario Carey support staff.
- administrative space for partner ministries such as Reaching and Teaching and The Crecer Foundation.
- a 10,000 volume theological library to be accessible by all local students.
- a large classroom for local gatherings.
- an audio/visual production space.
- multiple collaborative work spaces.
- a distance learning classroom.
- an apartment to be used by visiting professors.
- an outdoor patio and outdoor kitchen for large gatherings.

SECOND FLOOR

outdoor terrace with study space

large office

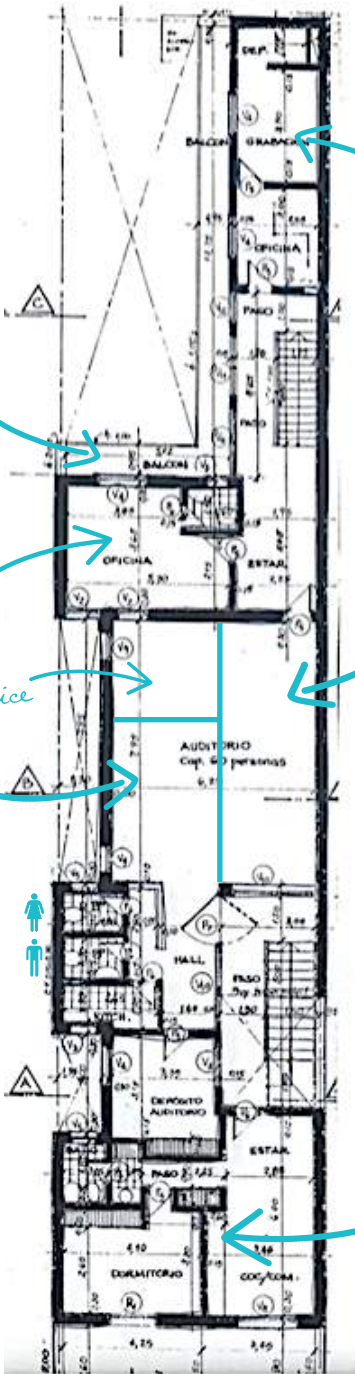
office

collaborative technical work-space

flex office space

conference room

visiting professor apartment



THIRD FLOOR

audio/visual production

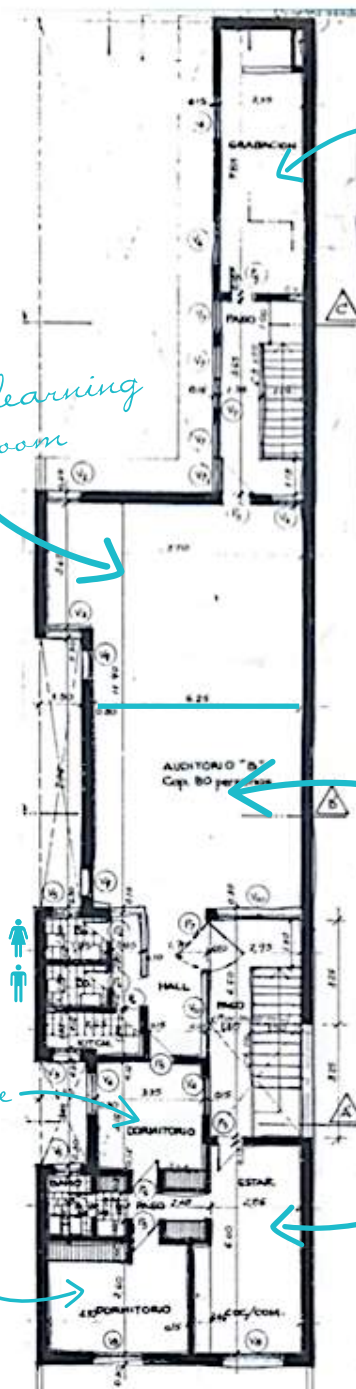
large distance-learning equipped classroom

library

office

shared work-space

office





20 ACRES

Phase three consists of purchasing 20 acres of space just outside of downtown Córdoba. Once the Administration Center is finished, a complete multi-purpose seminary campus is to follow. For this 20 acres provides ample space. Currently, this location is mostly corn fields, but we have a long term vision of using the land to grow new disciples of Christ.



The property being considered is on the very edge of Córdoba city limits. However, the city bus line terminates in the driveway of the property, providing quick and easy transportation for students as well as guests arriving from the airport. Additionally, Córdoba has a long term expansion plan of a second highway loop. The new property would be within this loop.



YOUTH & RETREAT CENTER

During the time it takes to raise the needed funds to build out an entire multi-purpose seminary campus, the purchased 20 acres will be used as a youth and retreat center, providing space for:

- summer youth camps.
- staff retreats for area churches.
- team-building retreats for local ministries.
- large celebration gatherings.
- any other community focused gatherings that benefit Kingdom growth.



“...what you have heard from me in the presence of many witnesses entrust to faithful men, who will be able to teach others also.”

The Apostle Paul to Timothy - 2 Timothy 2:2



PHASE 5

MULTI-PURPOSE CAMPUS

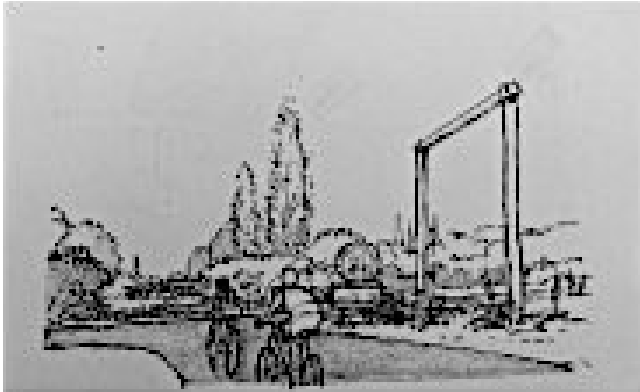


Phase 5 is organized around two large spaces.

The first area is academic in nature. It will contain the main buildings of the seminary: the academic center, administrative building, the chapel with its courtyard, and the maintenance building.

The second area, designed to be more open to the public, is where recreational and sport activities will take place. The gymnasium will also function as a multi-purpose building for conferences, events, retreats, and more.

PHASE 5

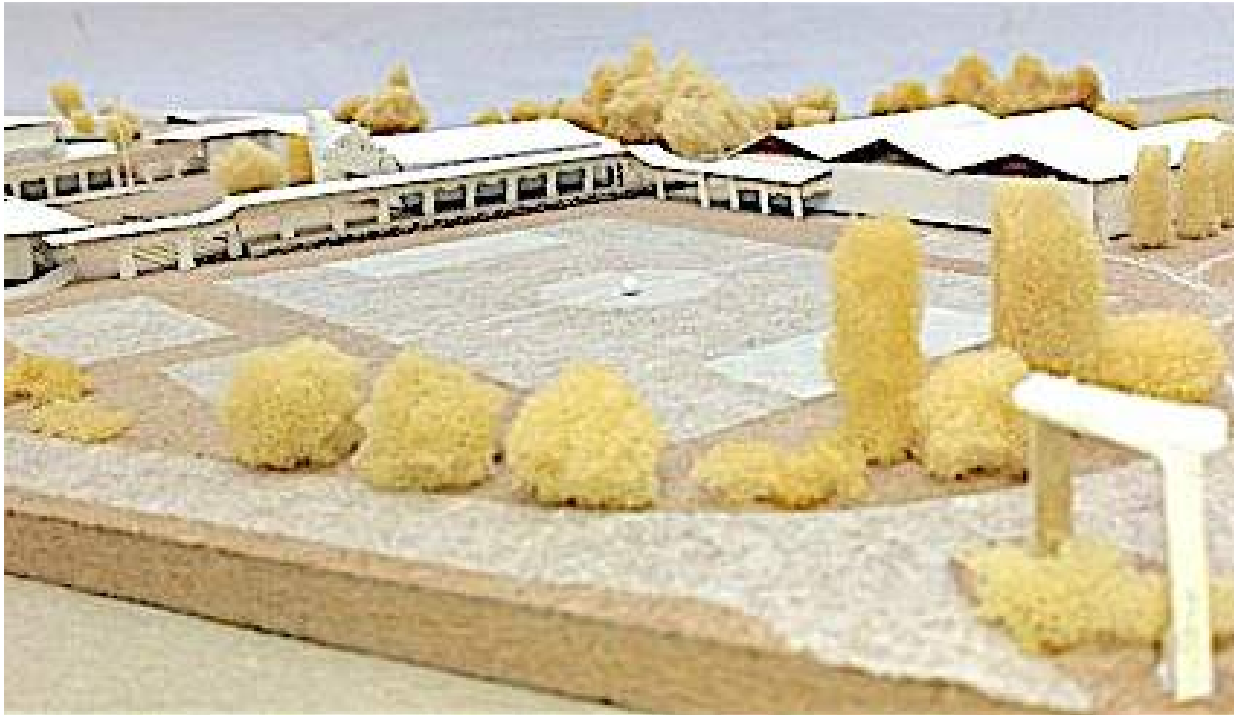


A large gateway announces the arrival to the Seminary campus. Vegetation marks the point of arrival and provides a framework for signage.



The winding street lined with large trees provides partial views of the sports fields, gymnasium, chapel, and the administrative buildings

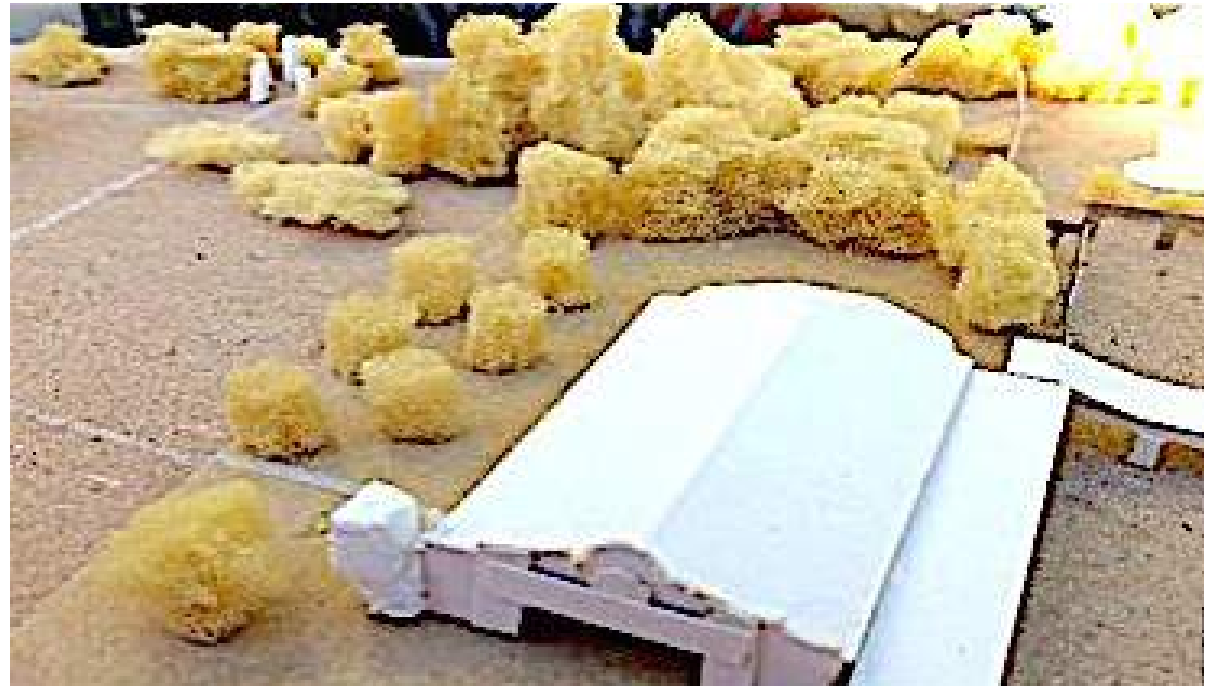
Student housing is located near the perimeter of the complex. It will also be used for retreats, camps and conferences.



The most distinctive feature of the complex is the covered gallery that links the two large structural areas. The gallery evokes architectural styles from the Colonial era of Córdoba. It connects all the main buildings on campus.

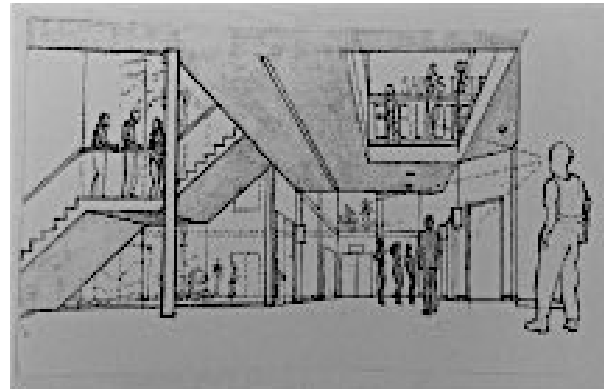
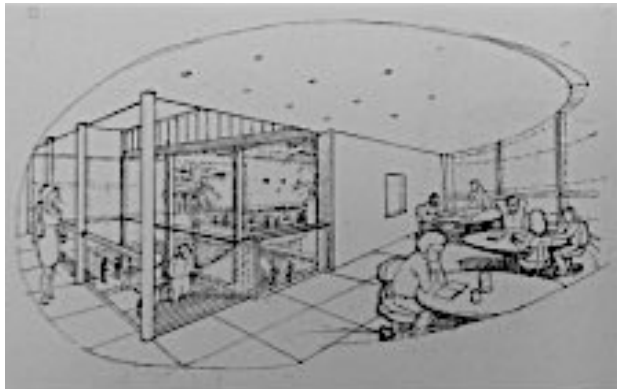
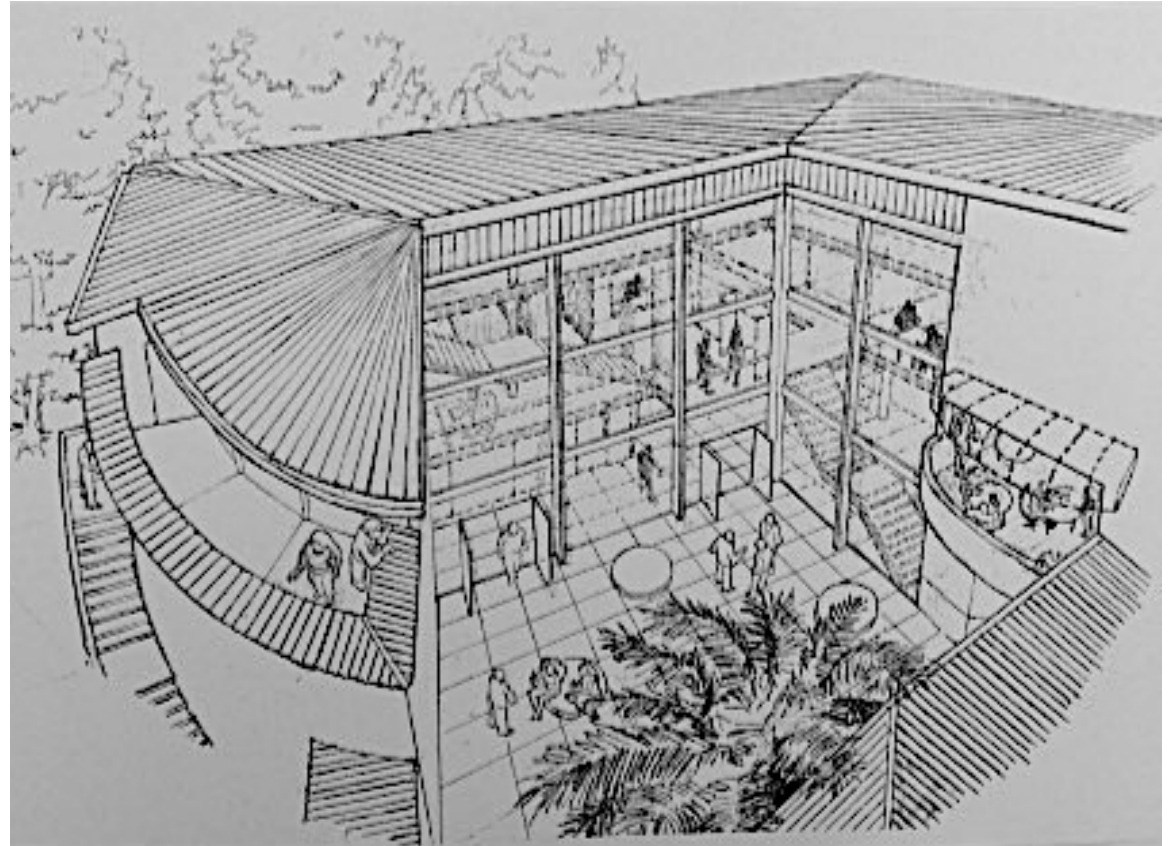
Throughout the campus, priority is given to the preservation and use of native trees, shrubs, and grassy areas, which require little maintenance and fosters the local identity of the place. In certain areas, such as the entrance patio and around the educational center, Tipas (*Tipuana tipu*) and Silk Floss (*Ceiba speciosa*) trees will be used.

Special attention will be given to the green space surrounding the chapel: its entrance is accented by a large *Prosopis* ("algarrobo") tree. Along one of the sides a large shaded area is produced by ornamental plum trees. Towards the back side, elegant trees forming a semi-circle mark off the area, with a view of the chapel in the background.



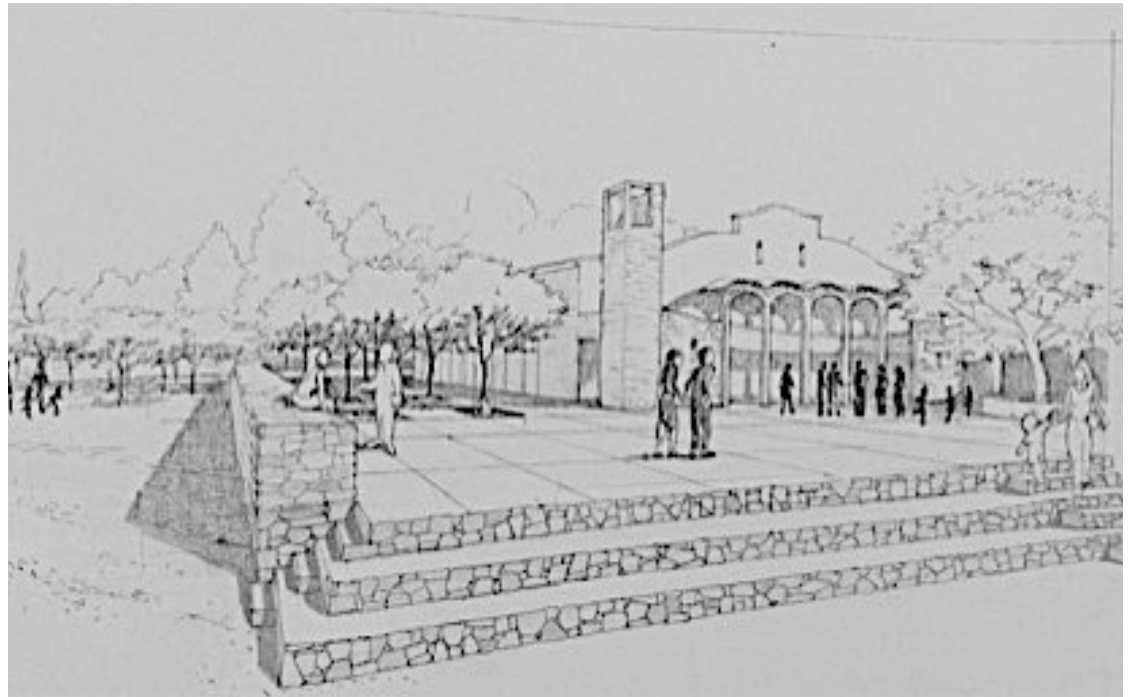
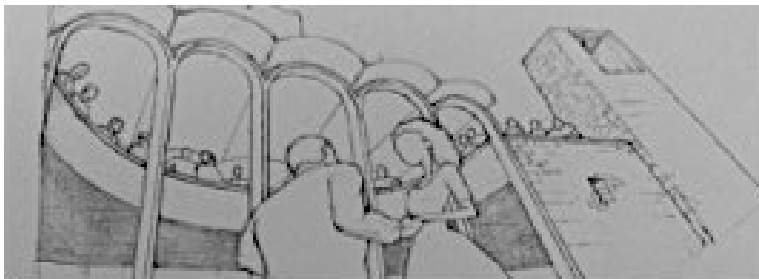
ACADEMIC BUILDING

The academic building has an open courtyard which not only allows natural light throughout the building but also gives an open and spacious feeling. Library shelving will be placed on interior walls allowing students using the reading areas to view the patio and gardens.



CHAPEL

The chapel, which divides the two large areas of the campus, is built upon a slightly rotated platform. Because of this, upon entering through the main entrance there is an impressive view of the Chapel.





IN CLOSING

I have been richly blessed in my life. God has given me the opportunity to serve people in some of the poorest areas of the world. He has allowed me to help plant several churches. But perhaps the biggest blessing God has given me in ministry is the chance to serve alongside a committed team of Latin American leaders.

I have also had the privilege of pursuing studies in some of the finest seminaries in the United States. Quite frankly, it bothers me that my Latin American brothers don't have access to that same level of training. I intend to spend the rest of my life attempting to remedy this.

I'm convinced the most fruitful thing I can do for the Kingdom of God is to train Latin American leaders. I hope you will prayerfully consider joining us in this endeavor.

- WWW.SEMINARIOCAREY.ORG
- INFO@SEMENARIOCAREY.ORG
- WWW.THECRECERFOUNDATION.ORG

DISTRIBUTED BY  **CRECER**
FOUNDATION IN SUPPORT OF SEMINARIO BÍBLICO WILLIAM CAREY